

**MARINE ENGINEERING**

MARINE CONSULTING & MANUFACTURING

**VINMEX**

INVESTMENT JSC



**GENERALCATALOGUE**



# CONTENTS

## 1. THE COMPANY

## 2. OUR MAIN PRODUCTS

2.1. Propeller shaft system & propeller

2.2. Provision crane / Knuckle crane / Davit for lifeboat, rescue boat

2.3. Anchor winch & windlass

2.4. Rudder & rudder blade system

2.5. Hydrophore tank unit

2.7. Steering gear

2.7. Window & Door

2.8. Air conditioner system & Refrigerating provision plant

2.9 Tunnel Bow Thruster

## 3. CERTIFICATES

## 4. SERVICE CONTACT

# 1. THE COMPANY

**VINMEX INVESTMENT JOINT STOCK COMPANY** was established in 2013, located in Haiphong, Vietnam.

With the factory located on the 80.000 square meter, we maximizing our assets in all production processes. We also take advantages of sea, airway and the experienced employees in management, business and technology to specialize in manufacturing marine equipment and confident to be distribution agents of many large marine equipment providers all over the world. We supply all products which have been certificated by high qualification classification societies from USA, Europe, Korea, Japan and China such as DNV, NK, KR, RINA, ABS, BV, GL, LR, CCS, IRS, VR. We have been giving the best solutions to the customers.

**Scope of business:**

- Propeller shaftsystem&propeller / Rudder&rudder blade system
- Provision crane / Knuckle crane / Davit for lifeboat, rescue boat
- Anchor winch & windlass
- Hydrophore tank unit
- Steering gear
- Window & doors
- Refrigeration chamber store system

**With slogan “YOUR BELIEF, OUR RESPONSIBILITY”, we are always attentive to listen and cooperate to all domestic and foreign business partners.**

## 2. MAIN PRODUCT

### 2.1. Propeller shaft system & propeller

With high skill and very experienced workforce, Vinmex is one of pioneer companies in manufacturing and supplying propeller, bow thruster and tunnel propeller system for all kind of vessels, including the tanker, container carriers, passenger vessels and freight vessels. Our products always ensure the high quality with modern function. We always aim to gain the trust of our dear customer.

Rudder



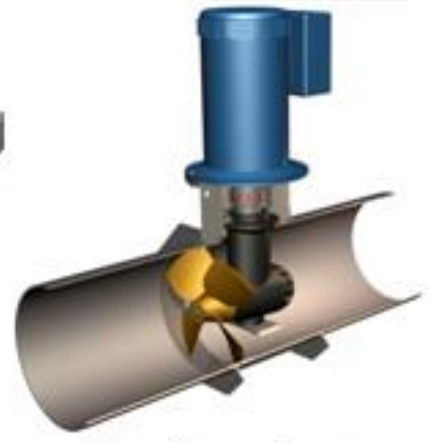
Becker rudder  
convensional rudder

Shafting System



Shafting system

Bow thruster



Tunnel type thruster



Main Propulsion System



Fixed pitch propeller

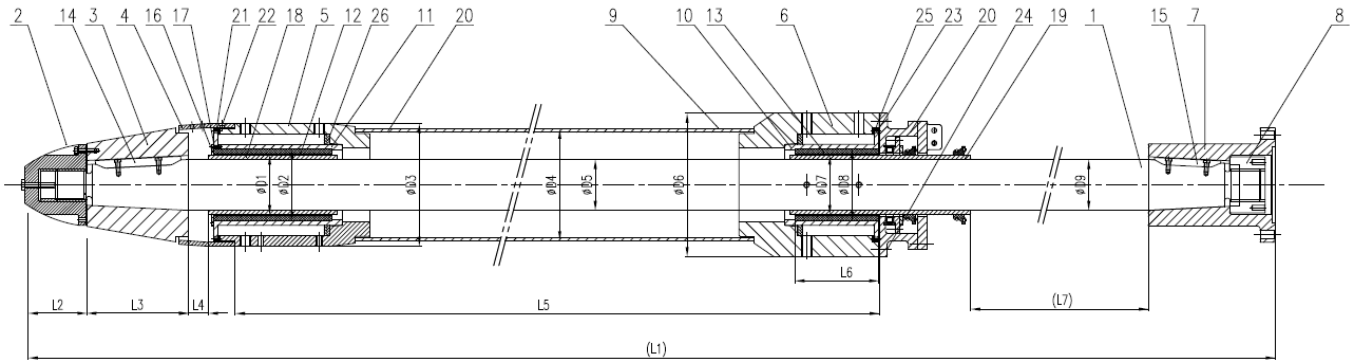


Electric propulsion system

# 2. MAIN PRODUCT

## 2.1.1. Propeller shaft

### Product specification



No.	Model	Diameter	Material	Length
1	VM-SF100	Below 100mm	SF45/50/55/60 (W)	Max. 6m
2	VM-SF150	100mm ~ 150mm	SF45/50/55/60 (W)	Max. 6m
3	VM-SF300	150mm ~ 300mm	SF45/50/55/60 (W)	Max. 8m
4	VM-SF500	Above 300mm	SF45/50/55/60 (W)	Max. 8m
5	VM-SS100	Below 100mm	SUS304/316/316L	Max. 6m
6	VM-SS150	100mm ~ 150mm	SUS304/316/316L	Max. 6m
7	VM-SS300	150mm ~ 300mm	SUS304/316/316L	Max. 8m
8	VM-SS500	Above 300mm	SUS304/316/316L	Max. 8m

## 2. MAIN PRODUCT

### 2.1.2. Propeller

#### NHV EFFECT

With unique technology, hub vortex causing energy loss and rudder erosion can be reduced by using specially shaped propeller blades, without the use of any special accessories. Reduced hub vortex improves efficiency and prevents rudder erosion.

#### TIP RAKE EFFECT

The unique shape of the blade tip developed by Nakashima is expected to reduce cavitation and aft fluctuating pressure.

#### HIGH SKEW EFFECT

Propellers with a sharp sweepback are called “high skew” propellers. Their unique shape reduces the vibration of a vessel's body as well as propeller noise.

#### Product specification

##### 1. 04 Blades – Fixed Pitch

No.	Model	Diameter	Material
1	VM-FPP0.5-4	Below 0.5m	HBsC1/AIBC3
2	VM-FPP1.0-4	From 0.5m to 1.0m	HBsC1/AIBC3
3	VM-FPP1.5-4	From 1.0m to 1.5m	HBsC1/AIBC3
4	VM-FPP2.0-4	From 1.5m to 2.0m	HBsC1/AIBC3
5	VM-FPP2.5-4	From 2.0m to 2.5m	HBsC1/AIBC3
6	VM-FPP3.0-4	From 2.5m onward	HBsC1/AIBC3

##### 2. 05 Blades – Fixed Pitch

No.	Model	Diameter	Material
	VM-FPP0.5-5	Below 0.5m	HBsC1/AIBC3
2	VM-FPP1.0-5	From 0.5m to 1.0m	HBsC1/AIBC3
3	VM-FPP1.5-5	From 1.0m to 1.5m	HBsC1/AIBC3
4	VM-FPP2.0-5	From 1.5m to 2.0m	HBsC1/AIBC3
5	VM-FPP2.5-5	From 2.0m to 2.5m	HBsC1/AIBC3
6	VM-FPP3.0-5	From 2.5m onward	HBsC1/AIBC3

## 2. MAIN PRODUCT

### 2.2. Provision crane / Davit for lifeboat, rescue boat

All cranes, davit of lifesaving equipment is being produced solely by Vinmex JSC / Vietnam. We have become one of the major providers for provision crane and davit for almost life-saving equipment in Vietnam market & foreign market.

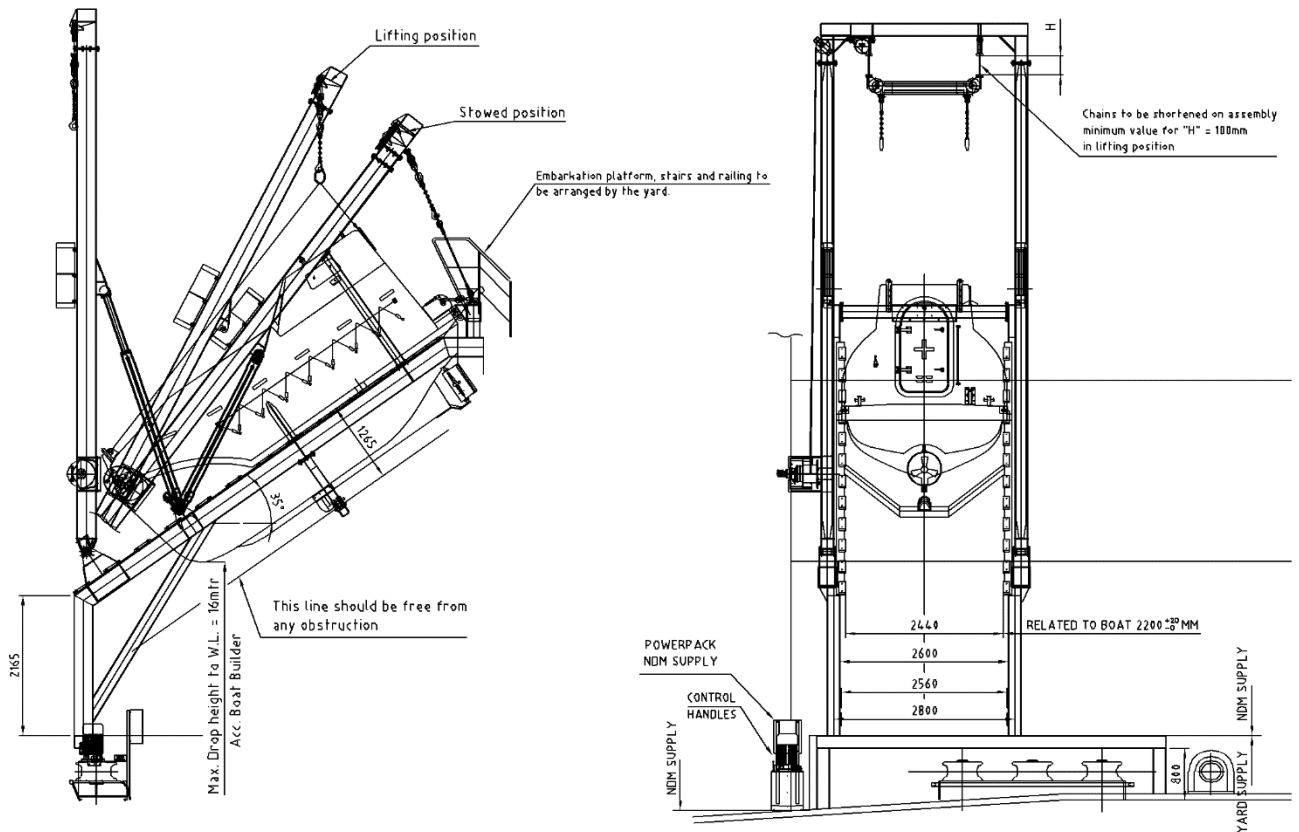
We put innovative developments into practice by applying state-of-the-art technology, by using the very latest materials and working in specialist teams to focus on every level of detail.

#### Product specification

#### 1. Launching appliance of freefall lifeboat davit

Model: VMF55, VMF75, VMF90, VMF105, VMF180, VMF220

SWL (kN): 55, 75, 90, 105, 180, 220

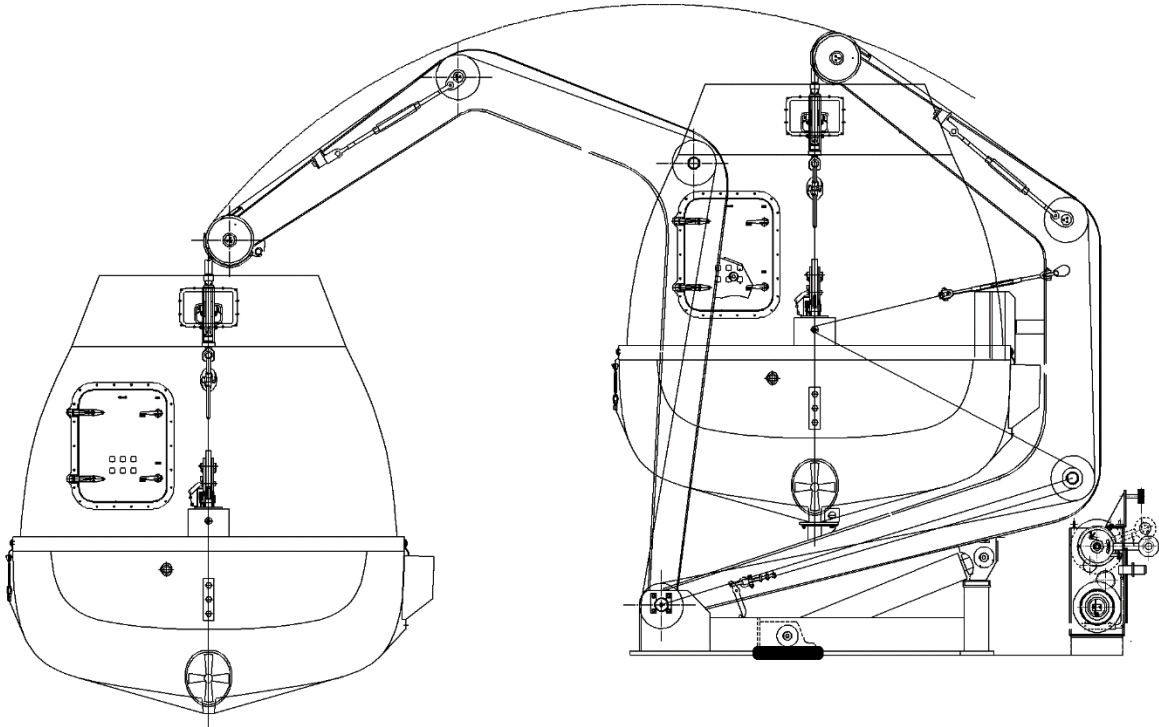


## 2. MAIN PRODUCT

### 2. Hydraulic Gravity davit

Model: VMHG01, VMHG02, VMHG03

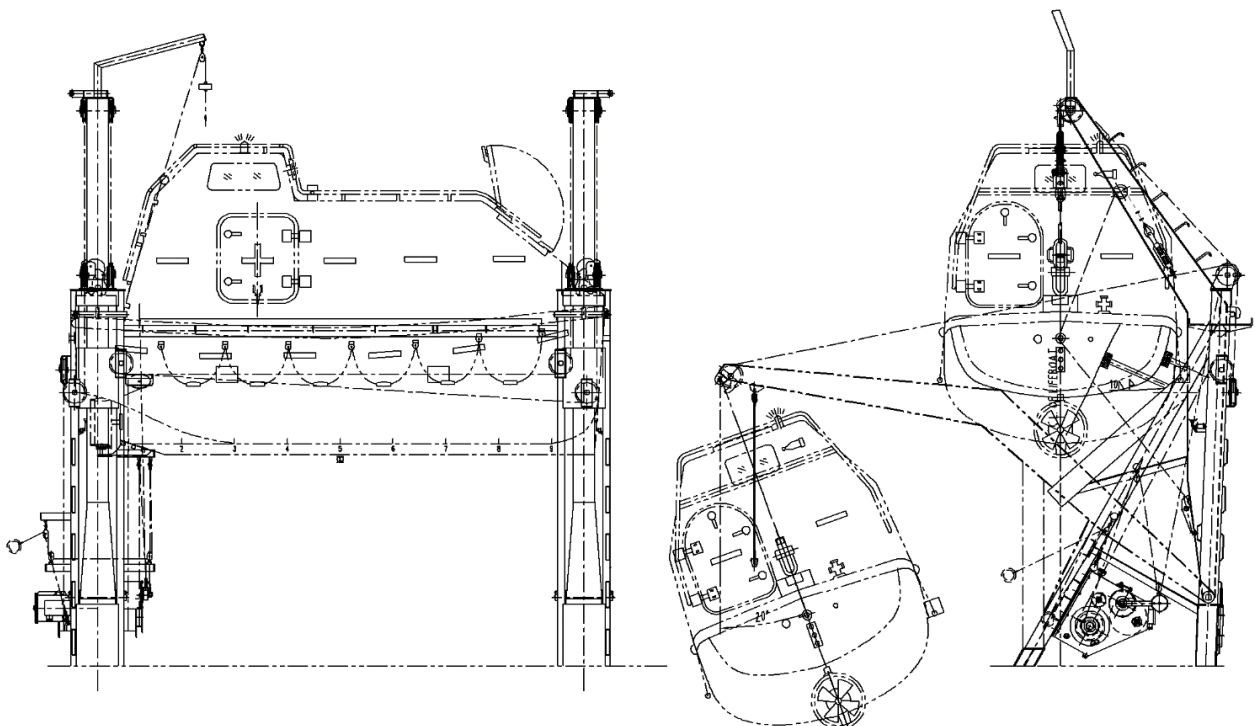
SWL (kN): 120, 180, 220



### 3. Gravity Luffing arm type davit

Model: VML52, VML55, VML65, VML71, VML85, VML105, VML135, VML170, VML220

SWL (kN): 52, 55, 65, 71, 85, 105, 135, 170, 220



Your belief – Our responsibility

## 2. MAIN PRODUCT

### 4. Platform Davit

Model: VMP65, VMP85, VMP105, VMP135, VMP170, VMP210

SWL (kN): 65, 85, 105, 135, 170, 210

### 5. Gravity Knuckle Beam Type Davit

Model: VMP65, VMP85, VMP105, VMP135, VMP170, VMP210

SWL (kN): 65, 85, 105, 135, 170, 210

### 6. Gravity Rolling Type Davit

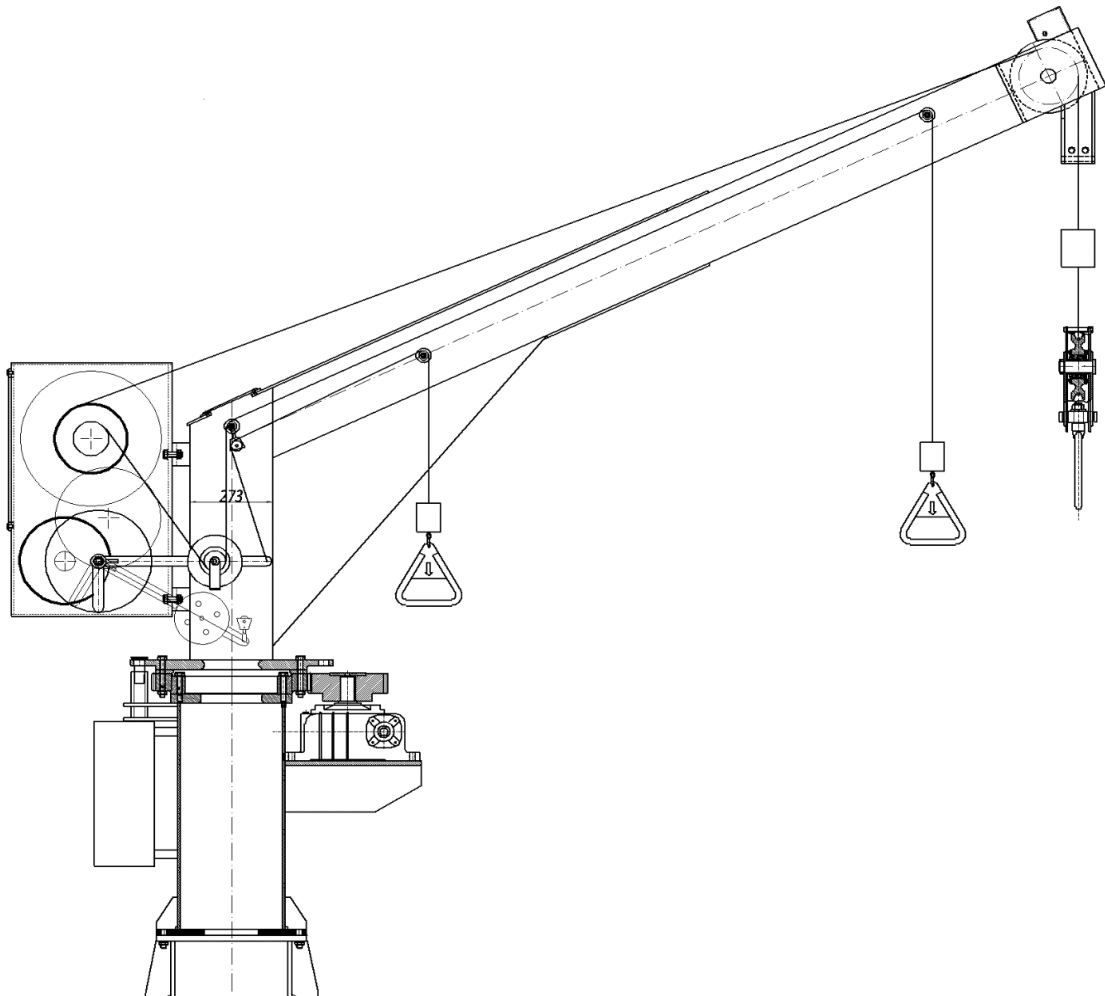
Model: VMGR65, VMGR85, VMGR115, VMGR170, VMGR220

SWL (kN): 65, 85, 115, 170, 220

### 7. Single Arm Slewing Boat-Raft Davit

Model: VMRH14, VMRH23, VMRH35

SWL  
(kN):  
14, 23,  
35

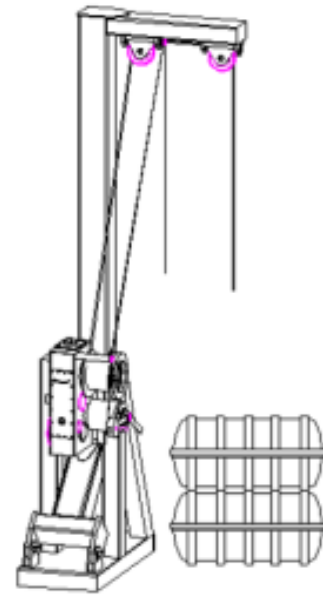


## 2. MAIN PRODUCT

### 8. L frame Life Raft Davit

Model: VMLR23, VMLR35

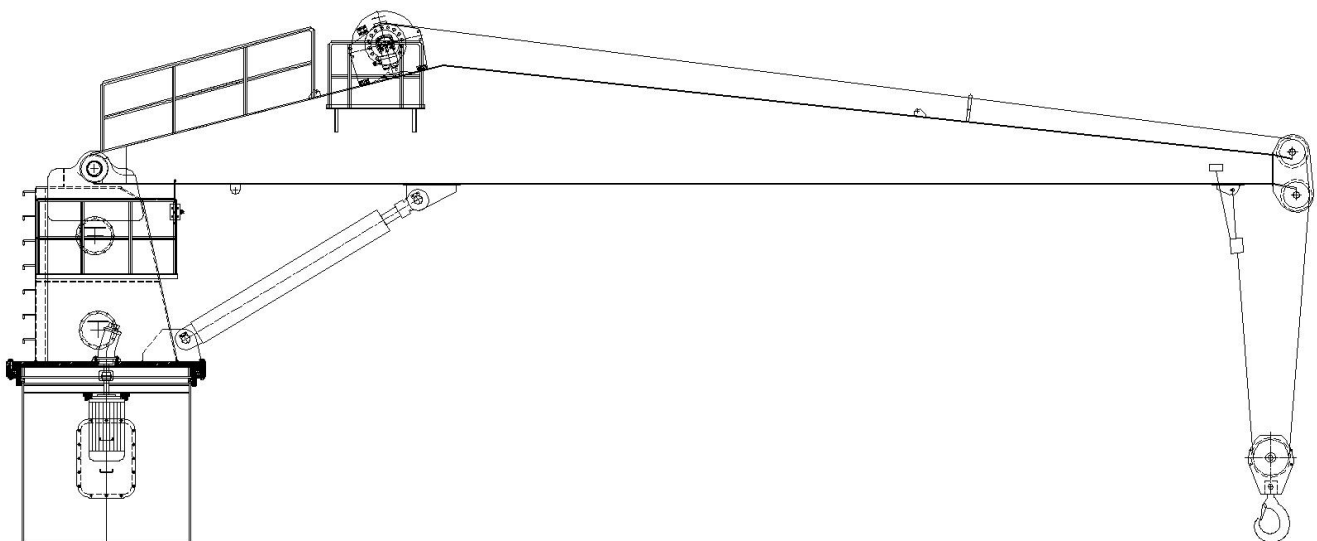
SWL (kN): 23, 35



### 9. Provision crane

Model: VMPC2.0, VMPC2.5

SWL: 1 ton; 1.5 ton; 2 ton ..... 15 ton.

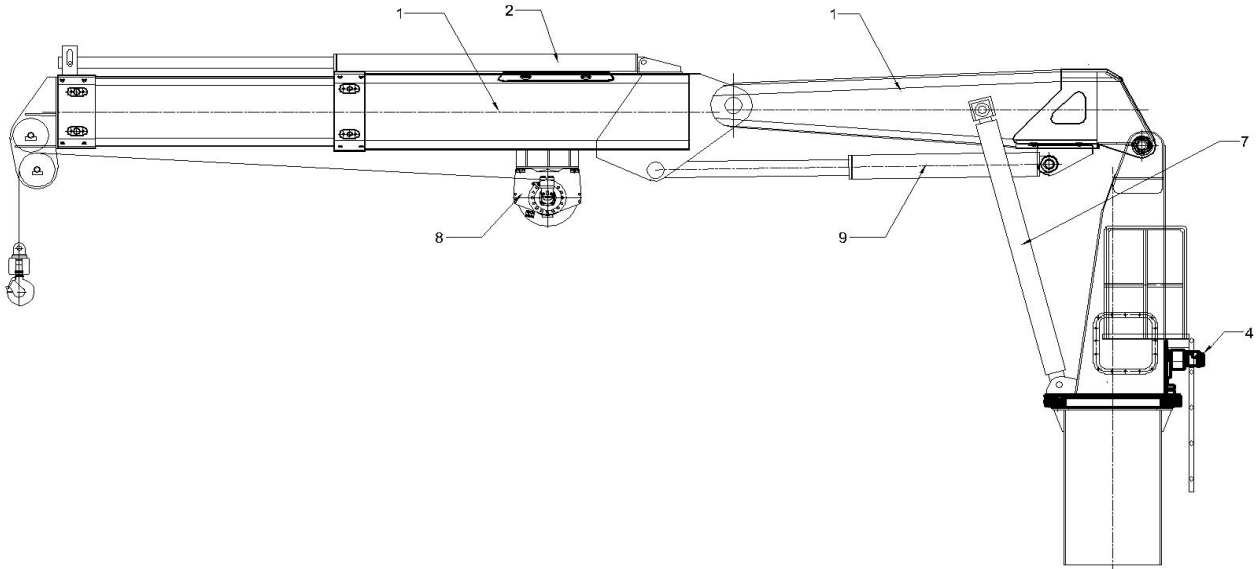


## 2. MAIN PRODUCT

### 10. Knuckle boom crane

Model: VMKBC 2.0/2.5/5

SWL: 1 ton; 1.5 ton; 2 ton ..... 15 ton.

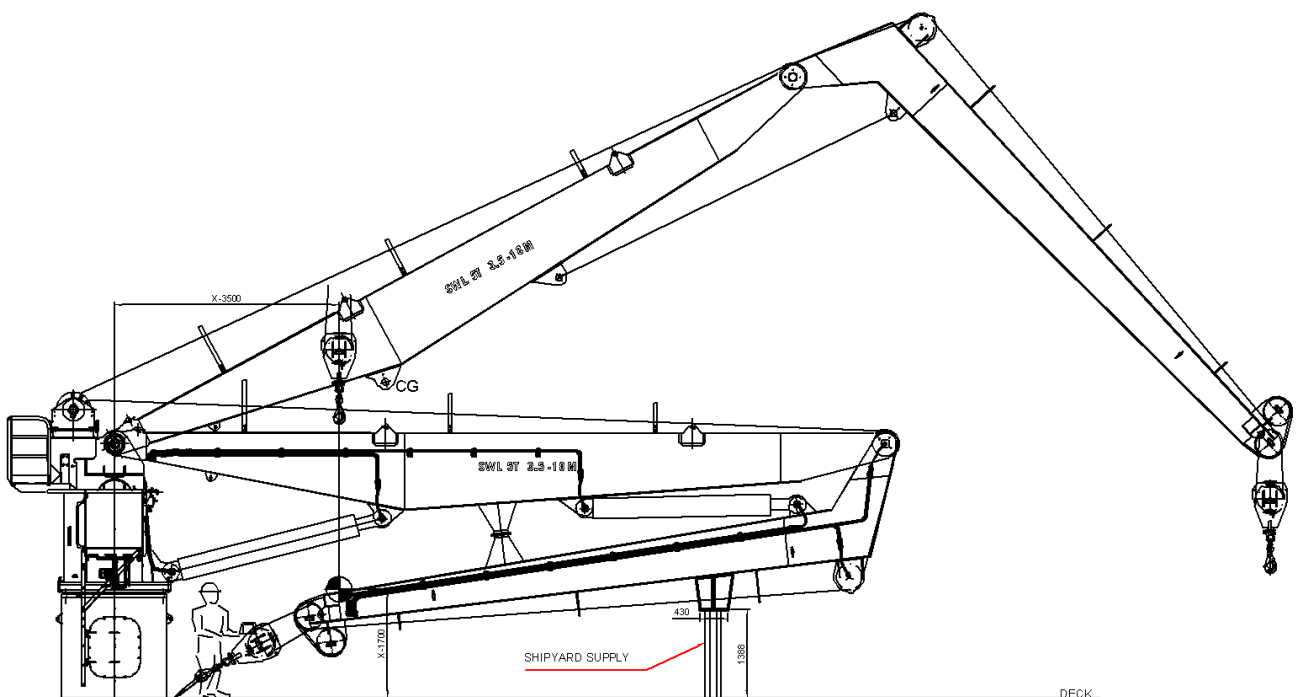


### 11. Knuckle crane

Model: VMKC 4/10/22

SWL: 4T@20m

SWL: 10T@4m

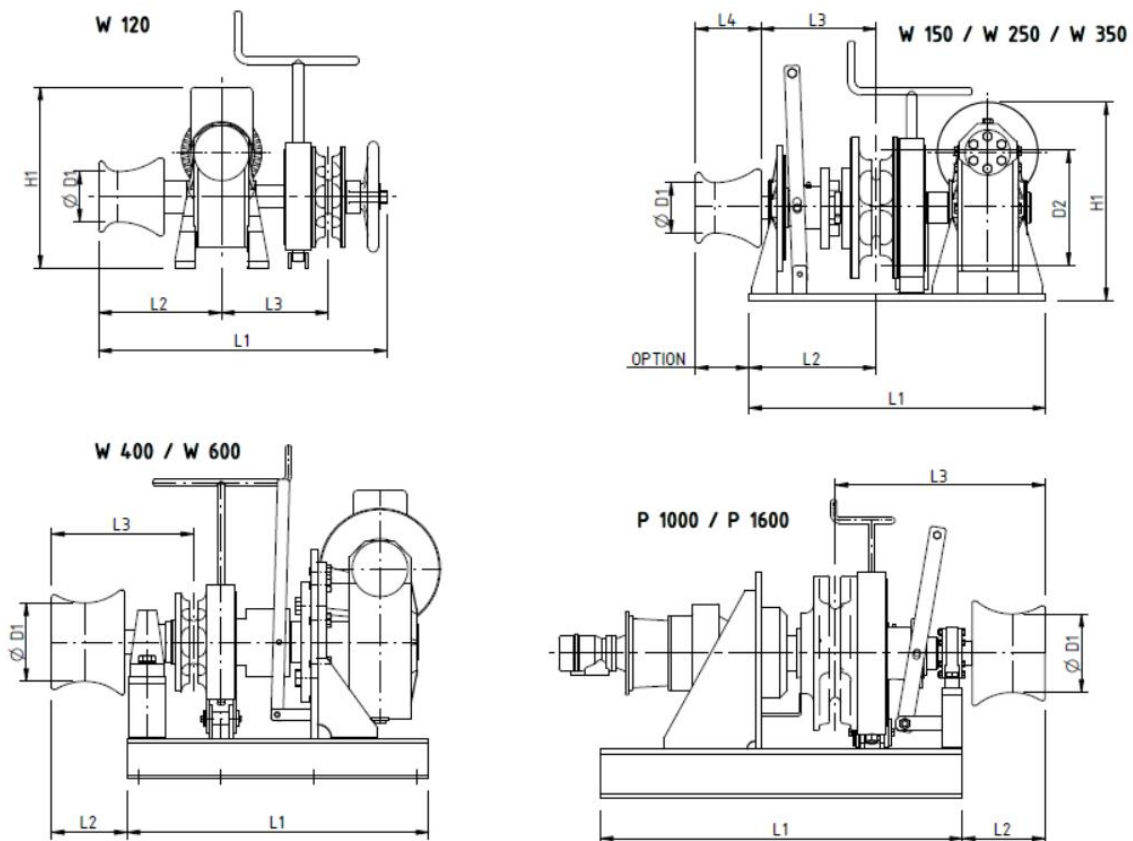


## 2. MAIN PRODUCT

Vinmex JSC is also specialize in manufacturing anchor winches. Our products always gain trust with our customer with compact design, easy to maintenance and high quality.

### 2.3.1. Anchor windlass

#### Product specification



## 2. MAIN PRODUCT

No.	Model	Chain Diameter (mm)	Power source
1	VM-TN-17	17.5	3P, 380/440V, 50/60Hz
2	VM-TN-19	19	3P, 380/440V, 50/60Hz
3	VM-TN-20	20.5	3P, 380/440V, 50/60Hz
4	VM-TN-22	22	3P, 380/440V, 50/60Hz
5	VM-TN-24	24	3P, 380/440V, 50/60Hz
6	VM-TN-26	26	3P, 380/440V, 50/60Hz
7	VM-TN-28	28	3P, 380/440V, 50/60Hz
8	VM-TN-30	30	3P, 380/440V, 50/60Hz
9	VM-TN-32	32	3P, 380/440V, 50/60Hz
10	VM-TN-34	34	3P, 380/440V, 50/60Hz
11	VM-TN-36	36	3P, 380/440V, 50/60Hz
12	VM-TN-38	38	3P, 380/440V, 50/60Hz
13	VM-TN-40	40	3P, 380/440V, 50/60Hz
14	VM-TN-42	42	3P, 380/440V, 50/60Hz
15	VM-TN-44	44	3P, 380/440V, 50/60Hz
16	VM-TN-50	50	3P, 380/440V, 50/60Hz

### Standard features

- Heavy duty worm gearbox or planetary/ worm gear combination.
- IP56 TENV cast iron.
- Free-fall clutch.
- Band brake.
- Suitable for various chain sizes.

### Available option

- Alternative supply voltages.
- Full manual control by hand wheel.
- Horizontal warping head configuration.
- Remotely controlled band brake.
- Special marine/offshore coating system.

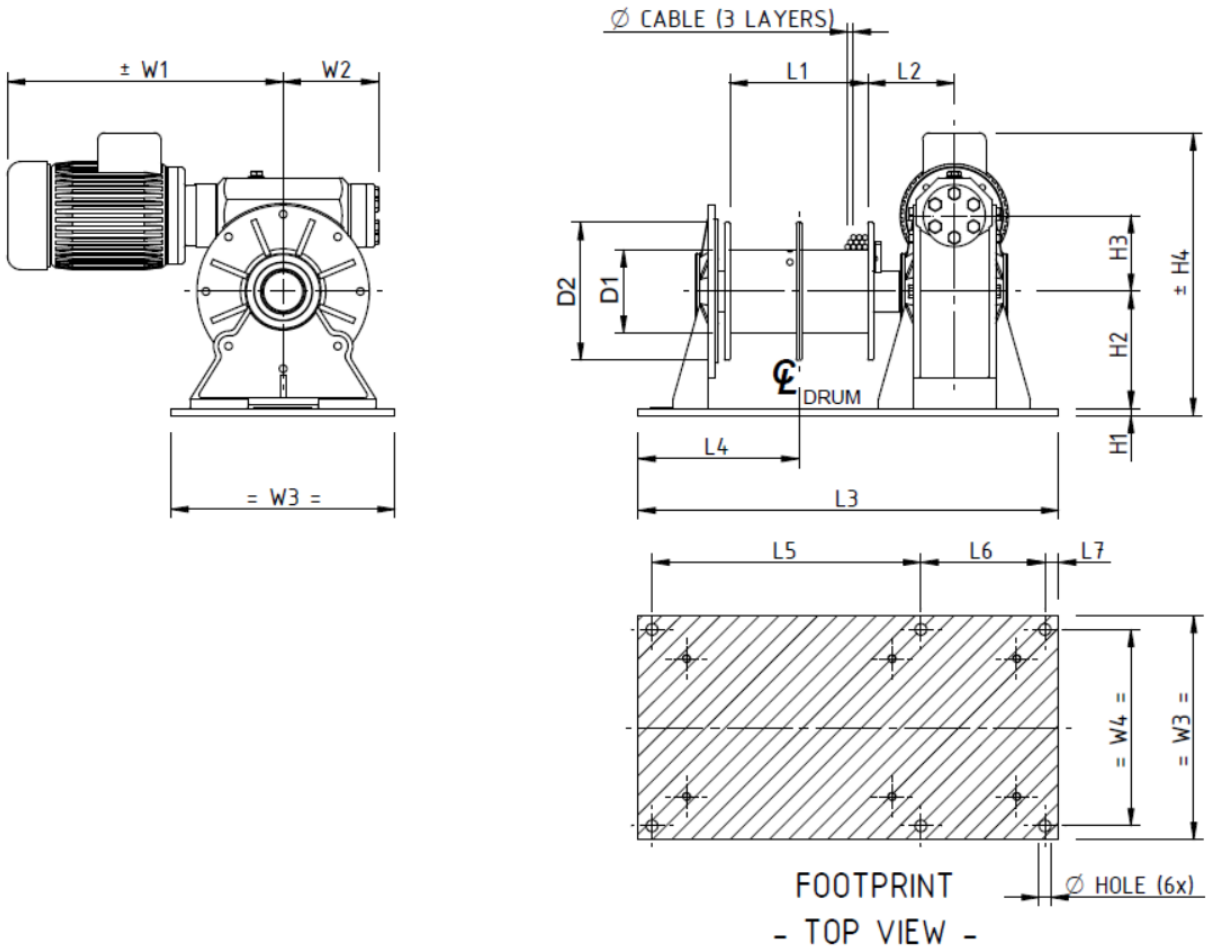
### Available control options

- IP 66 control box with IP 65 pendant remote control or push-buttons built
- Proportional local or remote-control valve

## 2. MAIN PRODUCT

### 2.3.2. Mooring winch

#### Product specification



## 2. MAIN PRODUCT

HORIZONTAL MOORING WINCH				VERTICAL MOORING WINCH			
No.	Model		Power (kN)	No.	Model		Power (kN)
	Hydraulic	Electric			Hydraulic	Electric	
1	VM-HHW-5	VM-HEW-5	5	1	VM-VHW-5	VM-VEW-5	5
2	VM-HHW-10	VM-HEW-10	10	2	VM-VHW-10	VM-VEW-10	10
3	VM-HHW-15	VM-HEW-15	15	3	VM-VHW-15	VM-VEW-15	15
4	VM-HHW-20	VM-HEW-20	20	4	VM-VHW-20	VM-VEW-20	20
5	VM-HHW-25	VM-HEW-25	25	5	VM-VHW-25	VM-VEW-25	25
6	VM-HHW-30	VM-HEW-30	30	6	VM-VHW-30	VM-VEW-30	30
7	VM-HHW-35	VM-HEW-35	35	7	VM-VHW-35	VM-VEW-35	35
8	VM-HHW-40	VM-HEW-40	40	8	VM-VHW-40	VM-VEW-40	40
9	VM-HHW-45	VM-HEW-45	45	9	VM-VHW-45	VM-VEW-45	45
10	VM-HHW-50	VM-HEW-50	50	10	VM-VHW-50	VM-VEW-50	50
11	VM-HHW-100	VM-HEW-100	100	11	VM-VHW-100	VM-VEW-100	100

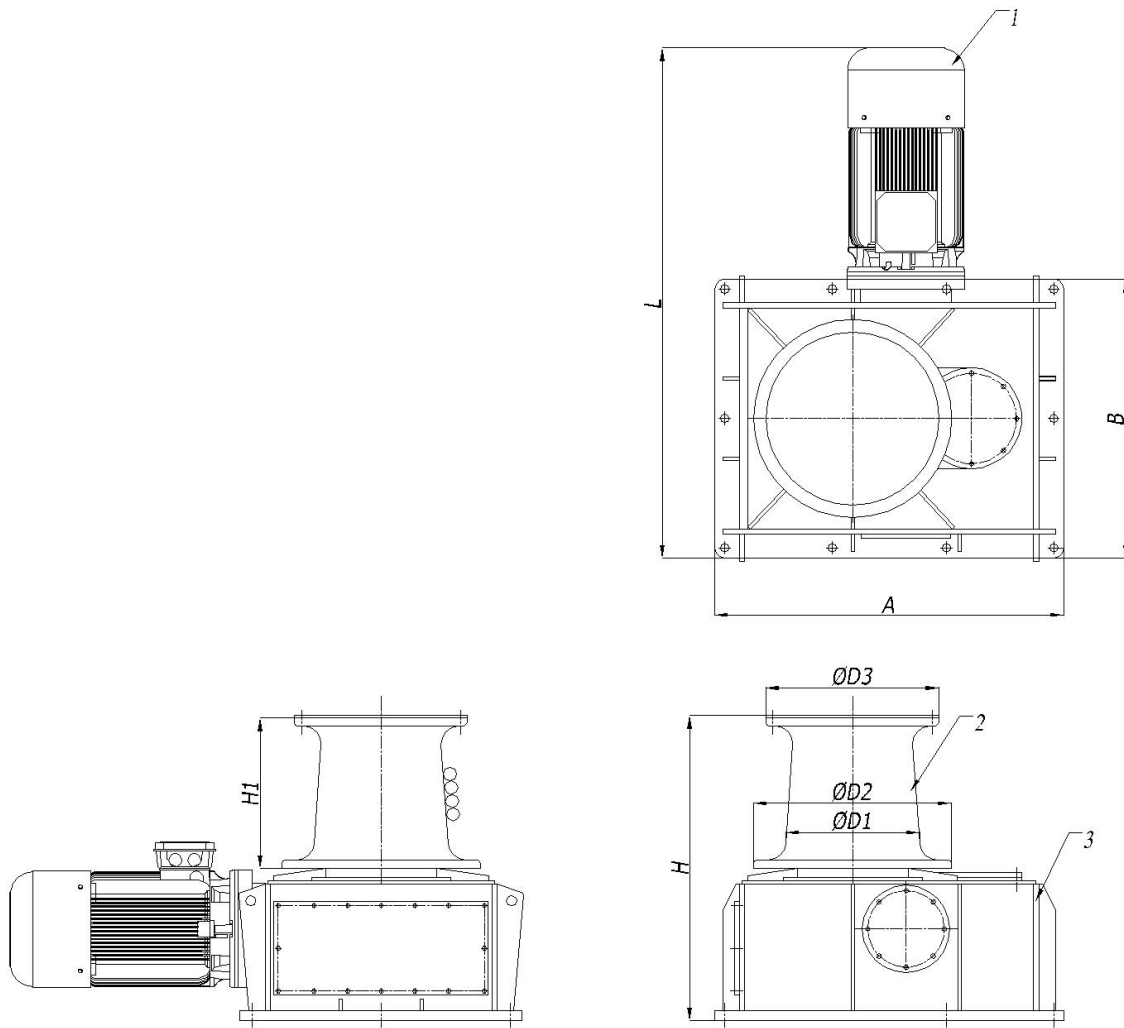
## 2. MAIN PRODUCT

### CAPSTANS

Capstans with pull from 1 to 32 tons.

Engine on or under deck.

ON REQUEST RENTAL CAPSTANS

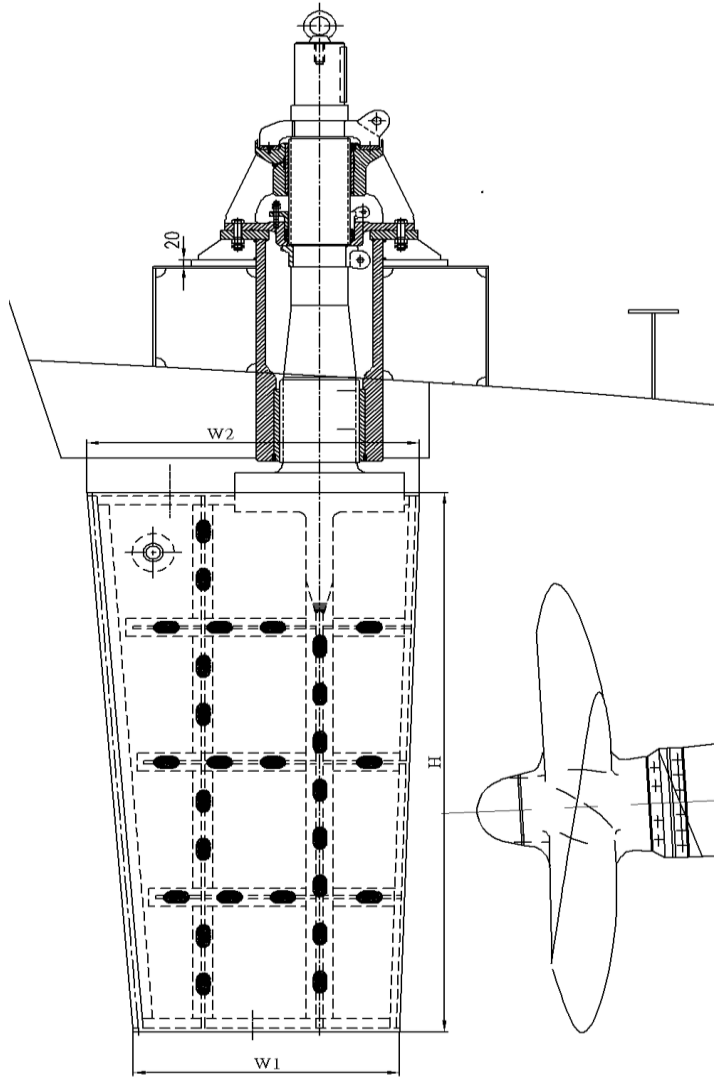


## 2. MAIN PRODUCT

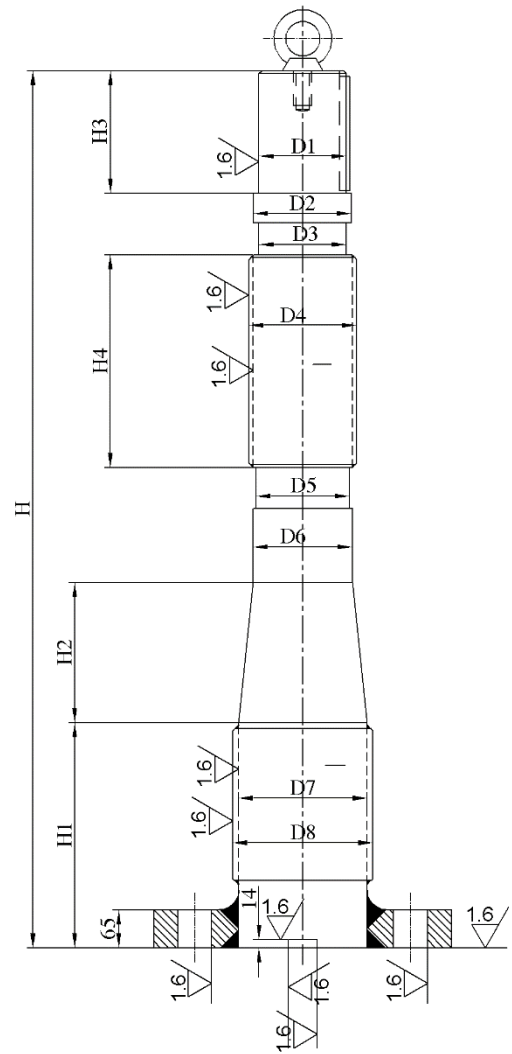
### 2.4. Rudder & Rudder system

Vinmex JSC offer to process all kind of rudder system for ship with different requirements and order of customer

#### Product specification



**Rudder**



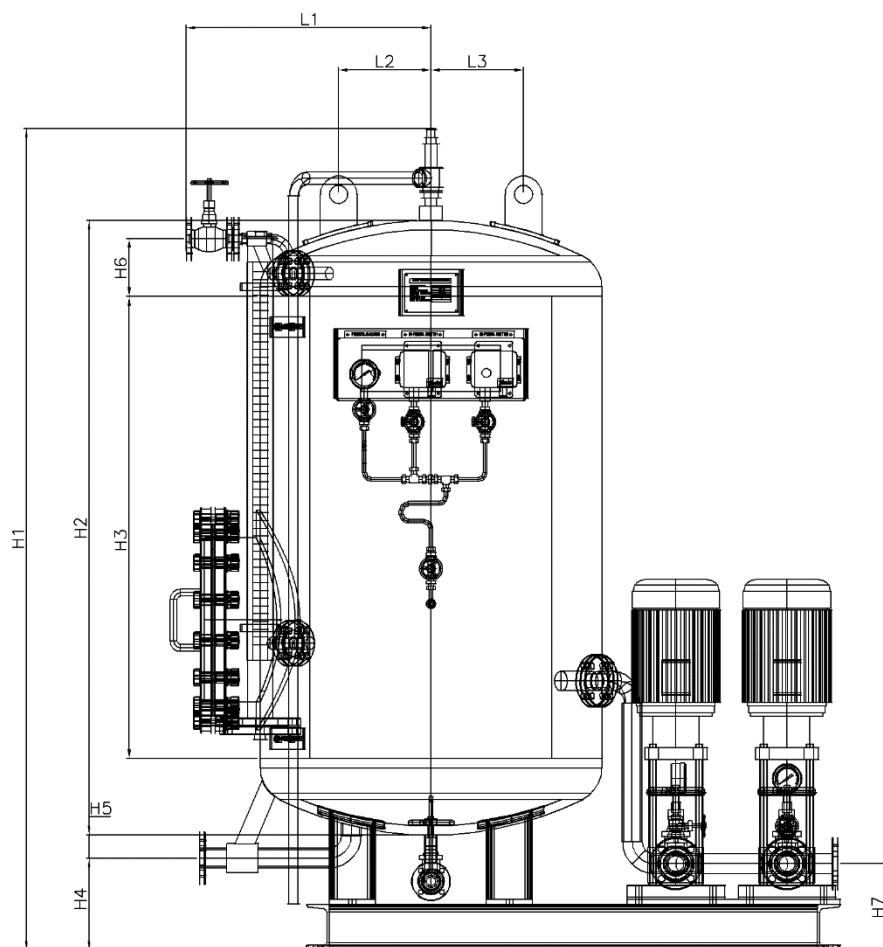
**Shaft of Rudder**

## 2. MAIN PRODUCT

### 2.5. Hydrophore tank unit

#### Product specification

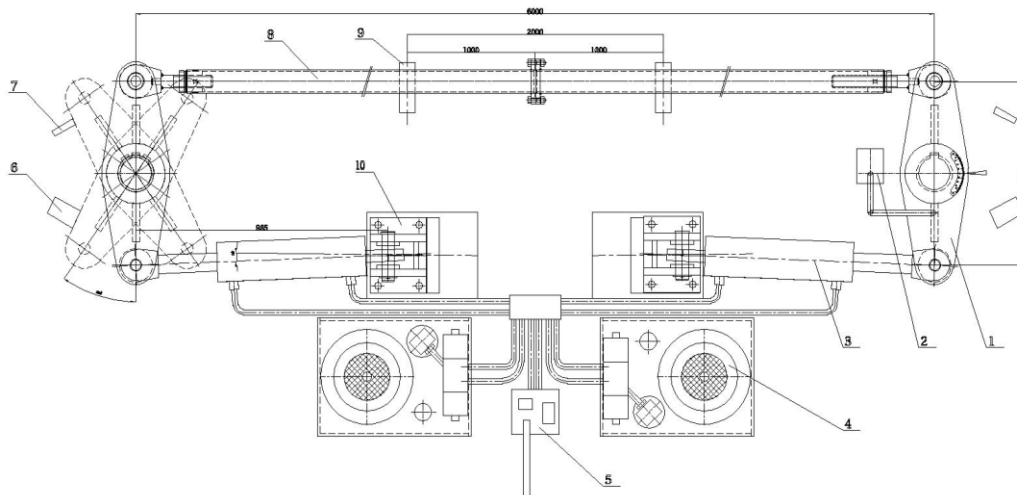
- Use for fresh water, sea water.
- Material: stainless steel



Model		VM-HT-0.2	VM-HT-0.3	VM-HT-0.5	VM-HT-1.0	VM-HT-1.5	VM-HT-2.0	VM-HT-2.5	VM-HT-3.0
Volume (m <sup>3</sup> )		0.2	0.3	0.5	1.0	1.5	2.0	2.5	3
Working pres. (Mpa)		0.4							
Design pres. (Mpa)		0.44							
Test pres. (Mpa)		0.66							
Take off pressure of safety valve (Mpa)		0.42							
Working temp. (°C)		0 ~ 45							
Design temp. (°C)		50							
Water pump	Flow rate (m <sup>3</sup> /h)	3	6.5	10			10		
	Pump head (m)	40	40	40			40		
Power (kW)		2.2	3	4			4		

## 2. MAIN PRODUCT

### 2.6. Steering gear



#### 2.6.1: Steering gear for ship with 01 rudders

No.	Model	Driving torque (T.m)	Power source
1	VM/SG 05-1	0.5	380/440V-50/60Hz
2	VM/SG 10-1	1.0	380/440V-50/60Hz
3	VM/SG 15-1	1.5	380/440V-50/60Hz
4	VM/SG20-1	2.0	380/440V-50/60Hz
5	VM/SG25-1	2.5	380/440V-50/60Hz
6	VM/SG30-1	3.0	380/440V-50/60Hz
7	VM/SG50-1	5.0	380/440V-50/60Hz
8	VM/SG80-1	8.0	380/440V-50/60Hz
9	VM/SG100-1	10.0	380/440V-50/60Hz

#### 2.6.2: Steering gear for ship with 02 rudders

No.	Model	Driving torque(T.m)	Power source
1	VM/SG 05-2	0.5	380/440V-50/60Hz
2	VM/SG 10-2	1.0	380/440V-50/60Hz
3	VM/SG 15-2	1.5	380/440V-50/60Hz
4	VM/SG 20-2	2.0	380/440V-50/60Hz
5	VM/SG 25-2	2.5	380/440V-50/60Hz
6	VM/SG 30-2	3.0	380/440V-50/60Hz
7	VM/SG 50-2	5.0	380/440V-50/60Hz
8	VM/SG 80-2	8.0	380/440V-50/60Hz
9	VM/SG 100-2	10.0	380/440V-50/60Hz

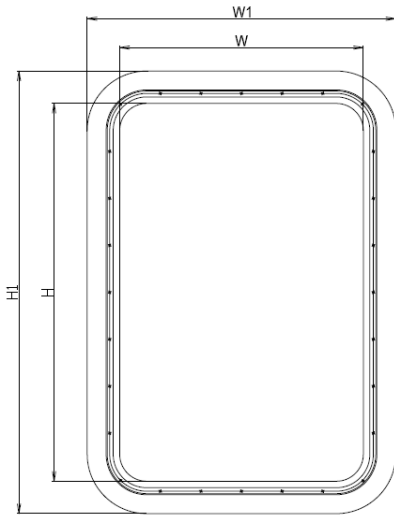
Other upon request

## 2. MAIN PRODUCT

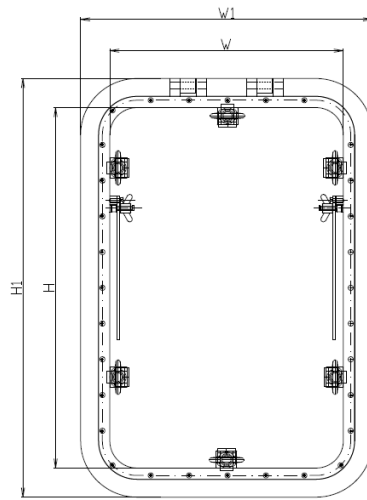
### 2.7. Window & Door

Product specification:

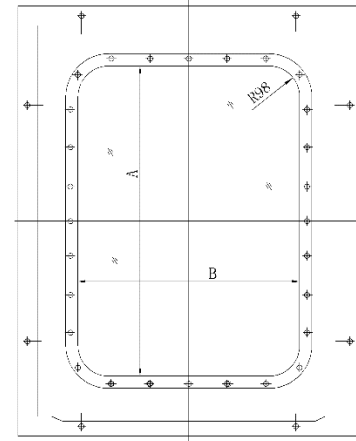
#### 2.7.1. Square Window (Welded type)



Fixed Window

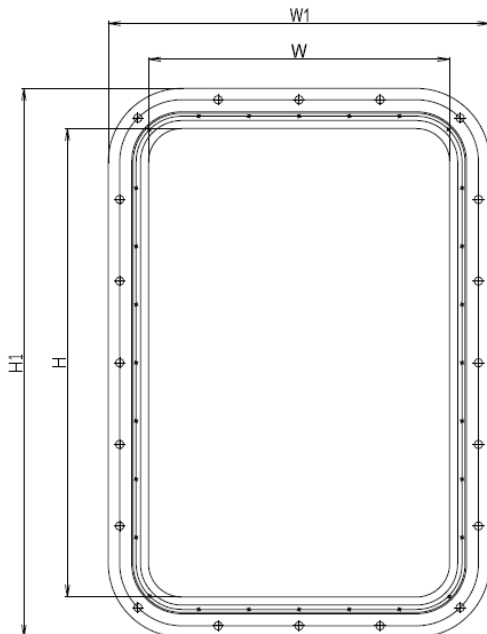


Opening Window

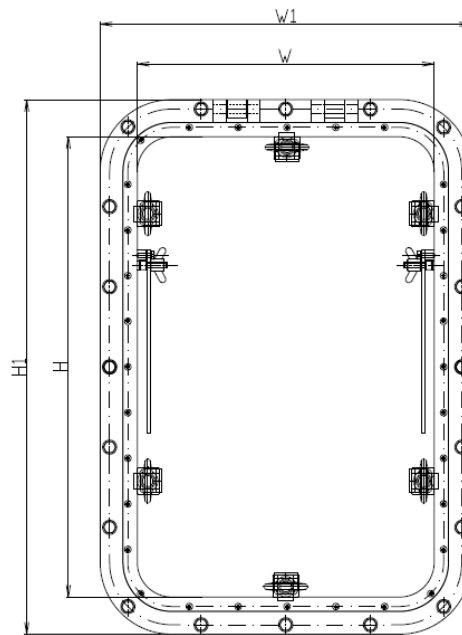


A0/A60 Fire Resistant Window

#### 2.7.2. Square Window (Bolted type)



Fixed Window



Opening Window



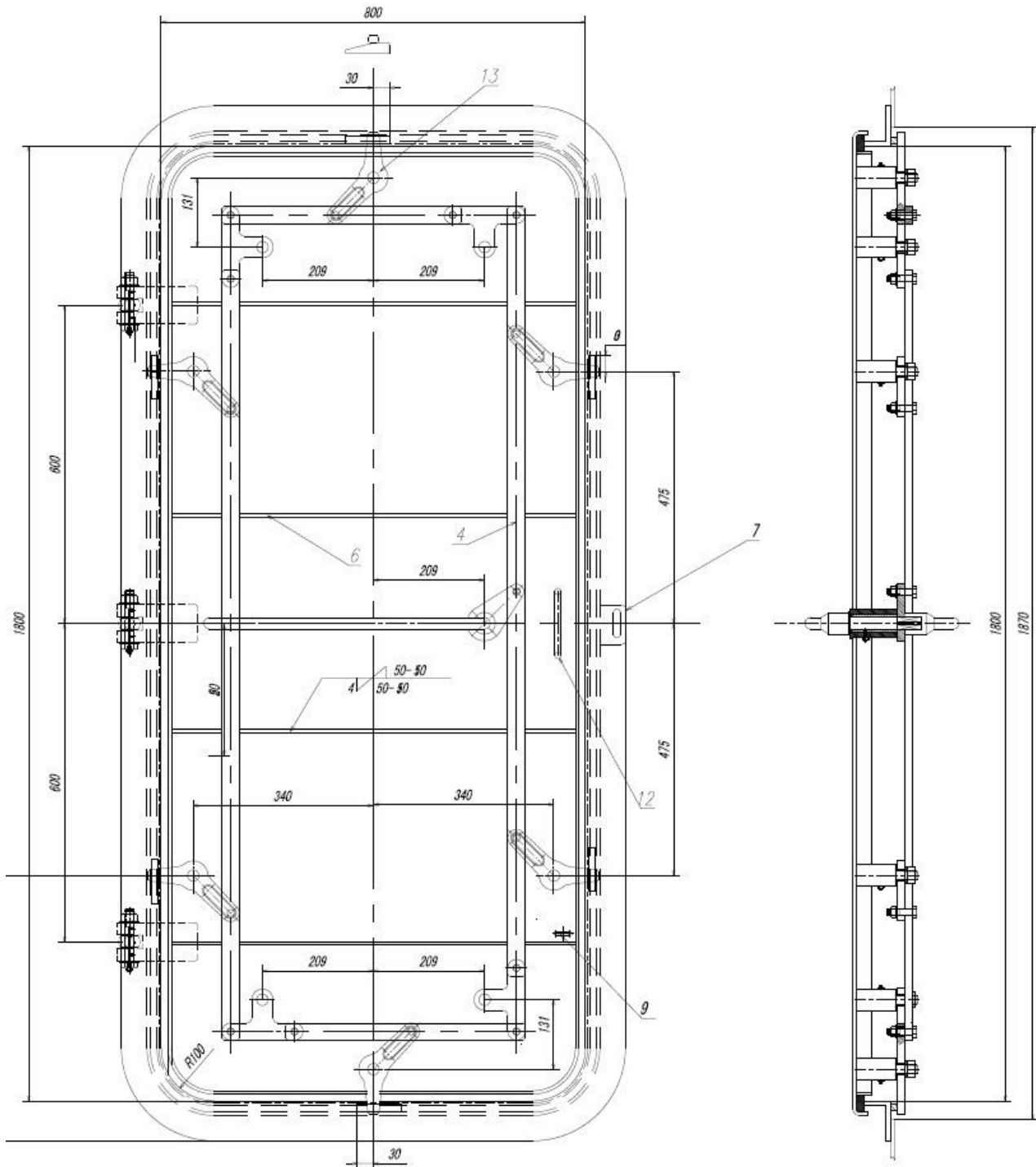
## 2. MAIN PRODUCT

### 2.7.5. Weathertight Door, Water tight Door

Material: Al-alloy / Steel / Stainless Steel

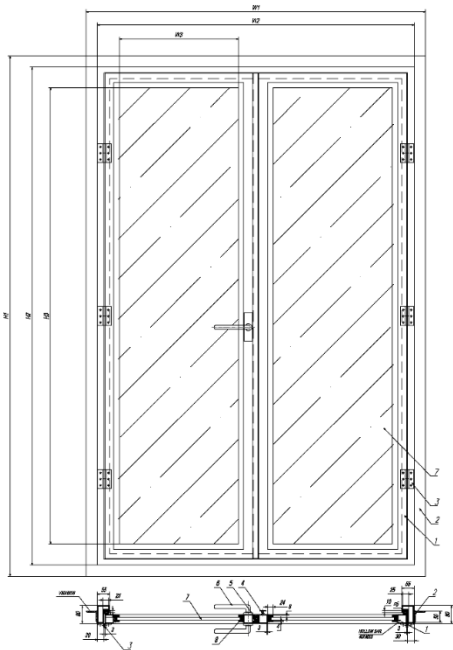
Installation method: Welded

Size: Customer requirement



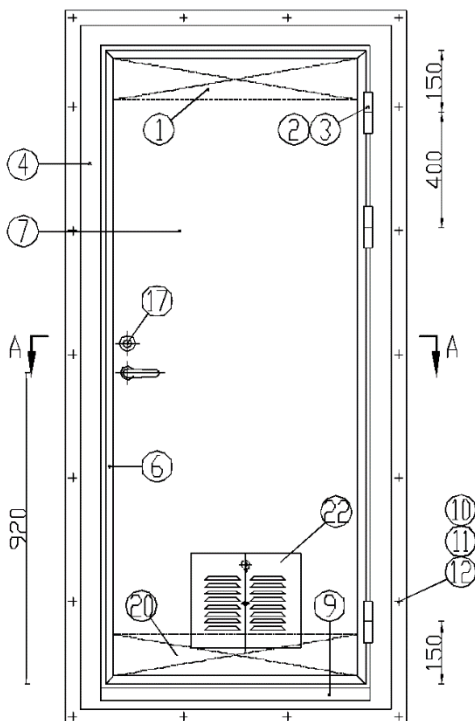
## 2. MAIN PRODUCT

### 2.7.6. Fire Resistant Door

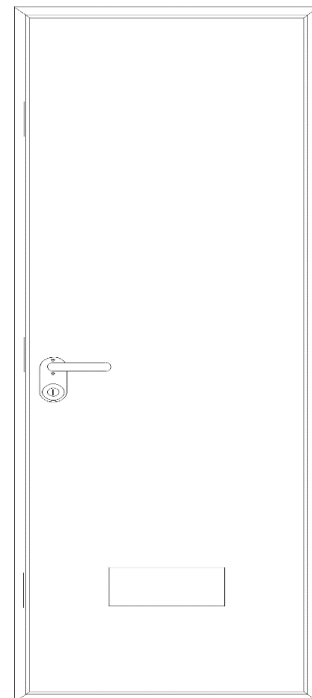


A0 Class  
A30 Class  
A60 Class  
H120 Class

### 2.7.8. Cabin Door



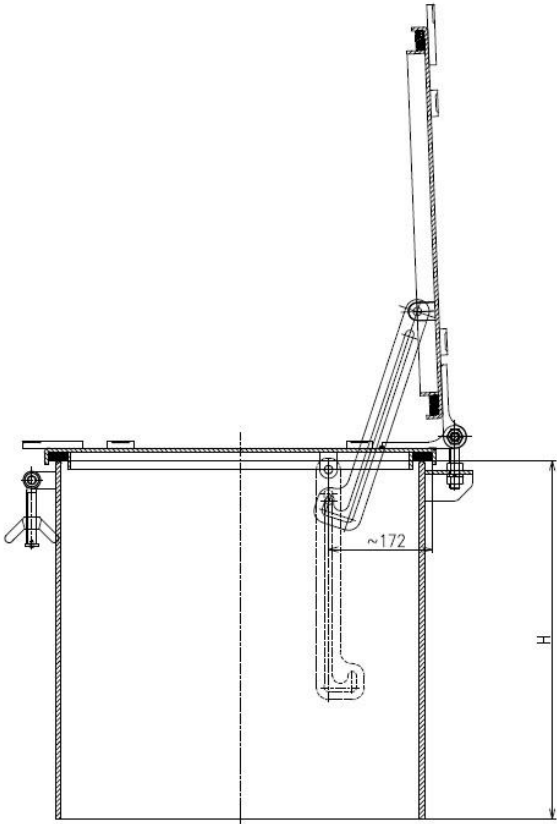
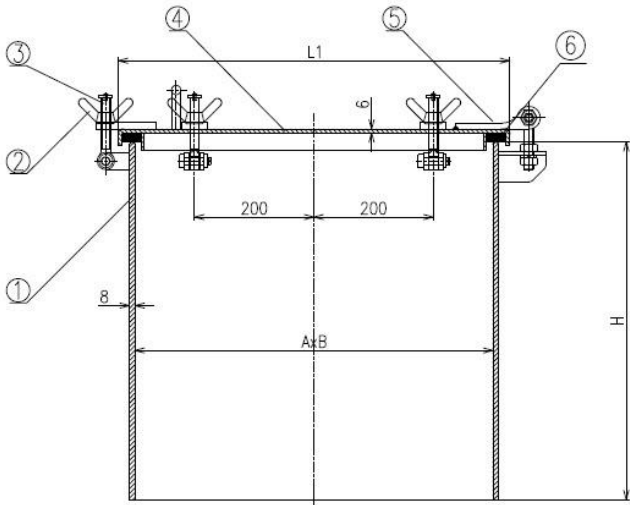
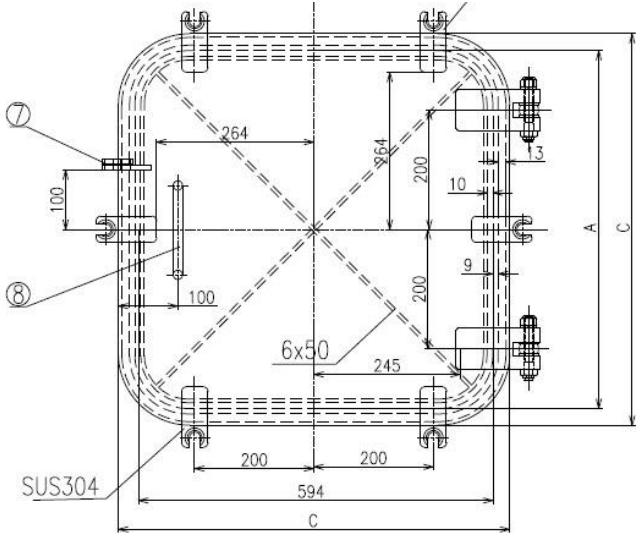
Fire Class: B15 / A0 / A60  
Material: Steel, Wool



Fire Class: A0 / A60  
Material: Wool

# 2. MAIN PRODUCT

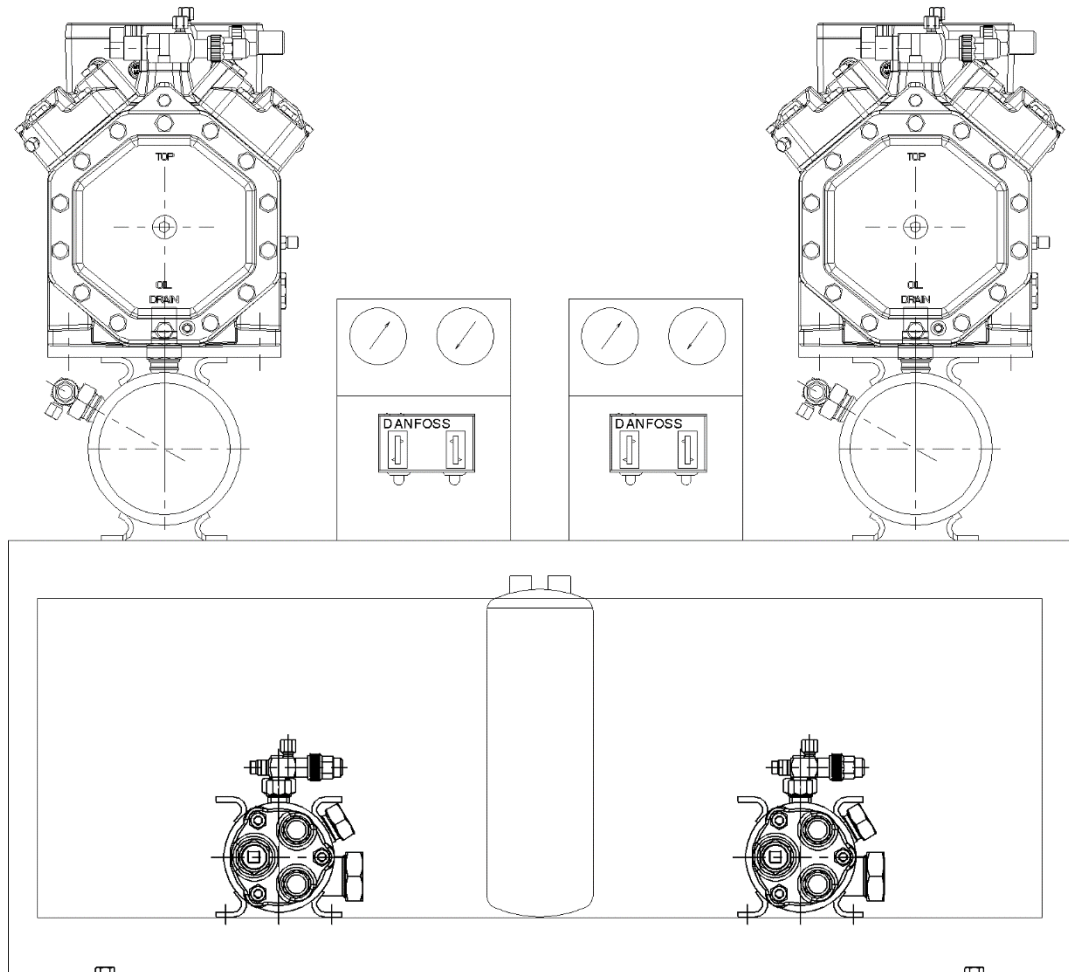
## 2.7.9. Hatch



## 2. MAIN PRODUCT

### 2.8. Air conditioner system & Refrigerating provision plant

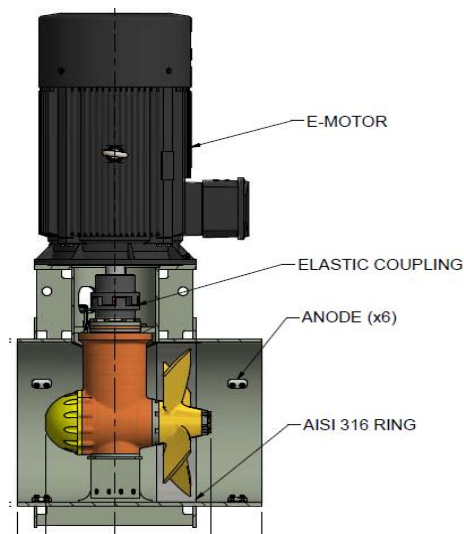
- Capacity ranging from 2-18kW



Model	VM-RU-2	VM-RU-4	VM-RU-6	VM-RU-8	VM-RU-10	VM-RU-12	VM-RU-14	VM-RU-16	VM-RU-18
Capacity (kw)	2	4	6	8	10	12	14	16	18
Gas	R404A	R404A	R404A	R404A	R404A	R404A	R404A	R404A	R404A

## 2. MAIN PRODUCT

### 2.9. Tunnel Bow Thruster



Propeller (mm)	Electric driven		Hydraulic driven	
	Rated power (KW)	Rated Thrust (KN)	Rated power (KW)	Rated Thrust (KN)
GT370	35	4.9	35	4.9
GT420	45	6.3	45	6.3
GT480	60	8.4	60	8.4
GT570	90	13	90	13
GT660	120	17	120	17
GT715	150	21	150	21
GT850	220	31	220	31
GT960	290	40	290	40
GT1080	360	50	360	50
GT1160	400	56	400	56
GT1240	480	67	480	67
GT1350	570	80	570	80
GT1550	750	105	-	-
GT1800	1000	140	-	-
GT2000	1300	182	-	-

# 3. CERTIFICATES

ETA-0 10

CỤC ĐĂNG KÝ VIỆT NAM  
VIETNAM REGISTER

**GIẤY CHỨNG NHẬN CÔNG NHẬN KIỂU**  
**CERTIFICATE OF TYPE APPROVAL**  
Mode B

Số: 082017PCNLS.TA  
No:

CỤC ĐĂNG KÝ VIỆT NAM CHỨNG NHẬN (Cơ quan thẩm định kỹ thuật sản xuất biển cơ sở chế tạo nội địa) Giấy chứng nhận này phù hợp với QCVN 04: 2015/BGT-VT "Quy chuẩn kỹ thuật Quốc gia về biển cơ sở chế tạo nội địa" (sau đây gọi là "Quy chuẩn").  
VIETNAM REGISTER CERTIFIES THAT the following products, produced by the manufacturer stated in the certificate, are found in compliance with the QCVN 04: 2015/BGT-VT "National Technical Regulation for the inspection of sea-going ship's products" (hereinafter refer to as "The Regulation").

**Sản phẩm được công nhận/ Product Approved:**  
THIỆT BÈ NÁNH HÀ, XƯƠNG CỘT SẼM - CẤP CỨU  
LIFEBEAT - RESCUE BOAT RAINING AND LAUNCHING APPLIANCES

Kiểu/ Type: VMHG 01

Sơ sở chế tạo/Manufacturer: CÔNG TY CỔ PHẦN ĐẦU TƯ VINMEX  
VINMEX INVESTMENT J.S.C  
Số 172026 Lê Lợi, Quận Ngũ Quyền, TP. Hải Phòng

Thị trấn/ Sea-going ship: Hải Phòng

Điều kiện công nhận/Assessment Standard:  
1. Quy chuẩn kỹ thuật Quốc gia về trang bị an toàn cho biển QCVN02: 2015/BGT-VT  
National technical regulation on safety equipment of ships QCVN02: 2015/BGT-VT  
2. Bộ luật quốc tế về trang bị cứu sinh (S.A. Code)  
The International Life - saving Appliances Code (S.A. Code)  
3. SOLAS 74 Convention as amended.

Giấy chứng nhận này có hiệu lực đến ngày: 12/12/2022  
This Certificate is valid until:

Cấp tại: Hải Phòng Ngày: 18/12/2017  
Issued at: Hai Phong Date: 18/12/2017

CỤC ĐĂNG KÝ VIỆT NAM  
VIETNAM REGISTER

Trần Kỳ Hinh  
General Director

VCN: 0115122

MĐ.0 10

CỤC ĐĂNG KÝ VIỆT NAM  
VIETNAM REGISTER

**GIẤY CHỨNG NHẬN CÔNG NHẬN NĂNG LỰC**  
**CƠ SỞ CHẾ TẠO**  
**CERTIFICATE OF APPROVAL FOR MANUFACTURES**

Số: 094017CNLS.MS  
No:

CỤC ĐĂNG KÝ VIỆT NAM CHỨNG NHẬN  
VIETNAM REGISTER CERTIFIES THAT

Cơ sở chế tạo/Manufacturer: CÔNG TY CỔ PHẦN ĐẦU TƯ VINMEX  
VINMEX INVESTMENT J.S.C

Địa chỉ: Số 172026 Lê Lợi, Quận Ngũ Quyền, TP. Hải Phòng  
Address: No. 172026 Le Loi street, Ngõ Quận District, Hai Phong City

Đã được đánh giá và công nhận đủ chỉ tiêu (chức năng) sản phẩm sau đây phù hợp với QCVN 05: 2015/BGT-VT "Quy chuẩn kỹ thuật Quốc gia về đánh giá năng lực cơ sở chế tạo và cung cấp dịch vụ tàu biển" (sau đây gọi là "Quy chuẩn").  
Has been assessed and approved to manufacture the following product(s) in compliance with the QCVN 05: 2015/BGT-VT "National Technical Regulation on the assessment of sea-going ship's manufacturers and service suppliers" (hereinafter refer to as "The Regulation").

**Sản phẩm/ Product:**  
Thiết bị nâng hạ xương cột sên - cấp cứu/Rescue - rescue boat raising and launching appliances  
Type là, chốt và ổ đỡ/Rubber stock, pin and bearing

Giấy chứng nhận này có hiệu lực đến ngày: 12/12/2022  
This Certificate is valid until:

Với điều kiện phải được xác nhận chu kỳ phù hợp với Quy chuẩn.  
subject to periodical endorsement in accordance with the Regulation.

Ngày ấn định đánh giá chu kỳ: 12/06/2020  
Periodical assessment date:

Cấp tại: Hải Phòng Ngày: 12/12/2017  
Issued at: Hai Phong Date: 12/12/2017

CỤC ĐĂNG KÝ VIỆT NAM  
VIETNAM REGISTER

Nguyễn Văn Hải  
Vice General Director

VCN: 0410112

  
**THE REPUBLIC OF THE UNION OF MYANMAR**  
**MINISTRY OF TRANSPORT AND COMMUNICATIONS**  
**DEPARTMENT OF MARINE ADMINISTRATION**

**Type Approval Certificate for Marine Equipment**

This is to certify that the undersigned, DAI, at the request of the manufacturer, attend their works for the purpose of inspecting and testing the products listed below:

**ONE TOWING WINCH**

Certificate No: 01 / 2018  
Manufacturer: VINMEX  
Equipment Name: TOWING WINCH (LUBRICATED HYDRAULIC)  
Capacity: 40 TONS  
Serial No: VM - TW 18 - 011

Following items of inspection and testing were carried out and, so far as can be seen, found complying with approved drawings:

- Reviewing of the material test reports.
- Reviewing of works certificate with test reports.
- Load test with weight of 40 tons on each steps lasted 15 minutes while the winch was at factory.
- Visual inspection.

Notes:  
Final acceptance will be subjected to satisfied test on board the vessel.

Date of issue: 21.01.2018

Surveyor:   
Department of Marine Administration

Certificate number: SMS/R/110030A/0

  
Marine & Offshore

www.bv.com

**RECOGNITION FOR  
BV MODE II SCHEME**

**VINMEX INVESTMENT JOINT STOCK COMPANY**  
HAI PHONG - VIETNAM

**Summary of the range of the recognition which is detailed in the subsequent page(s):**

- Solid Stern Propeller
- Propulsion shafting system
- Rubber, Rubber Stock,
- Hydrophone System
- Davit for life boat, rescue boat
- Provision Crane
- Winches & Moving Winches
- Capstan, Towing Winches
- Aluminium Winches
- Water Tight Door and Weather-tight door
- Fire Doors
- Fire-fighting pump
- Hydraulic power pack unit
- Switch Board & Component

The certificate is issued in effect that Bureau Veritas Marine & Offshore has performed, at the above company's request and in compliance with the requirements of BV200, a satisfactory assessment of the manufacturing facilities and associated quality procedures related to the range of the recognition.

**This certificate will expire on: 10 May 2022**

For BUREAU VERITAS,  
At BV HAIPHONG, on 21 May 2018,  
My Ton Binh


The certificate remains valid until the date stated above, unless cancelled or revoked provided the certificate holder(s) the subsequent page(s) are complied with. This certificate is issued within the scope of the General Conditions of Service, Bureau Veritas Marine & Offshore available on the internet site www.bv.com. Any dispute will be dealt in the contract pursuant to which this document is delivered may not exceed a date against Bureau Veritas Marine & Offshore for any liability arising out of errors or omissions which may be contained in said documents, or for errors of judgement, fault or negligence committed by personnel of the Society or its Agents in establishment or issuance of this document, and in connection with any activities for which they are liable.

The electronic version is available at: <http://www.veritas.com/veritas/bv/veritasPublicPDFRegistration.pdf?token=822710>

## 4. SERVICE CONTACT

### **Head Office**

No. 159A Building Vu Chi Thang road, NghiaXa, Le Chan, Hai Phong, Viet Nam

Tel.: +84 2256622 929

Website: [www.vinmex.vn](http://www.vinmex.vn)

Mr. John Vu

Chairman

Email: [ceo@vinmex.vn](mailto:ceo@vinmex.vn)

Hotline: +84 918 552 569

Mr. Linh Le

General Manager Assistant

Email: [sale@vinmex.vn](mailto:sale@vinmex.vn)

Hotline: +84 934 245 202

Mr. Duc Nguyen

General Manager Assistant

Email: [sales2@vinmex.vn](mailto:sales2@vinmex.vn)

Hotline: +84 938 136 920/+84 984 457 450

### **Factory**

KienPhong, Dong Thai, An Duong, Hai Phong, Viet Nam

Mr. DinhNhu Thanh

Email: [tech@vinmex.vn](mailto:tech@vinmex.vn) / [vinmex.thanhdn@gmail.com](mailto:vinmex.thanhdn@gmail.com)

Hotline: +84 936 699286 / +84 931 504688